



**abitare**  
mediterraneo

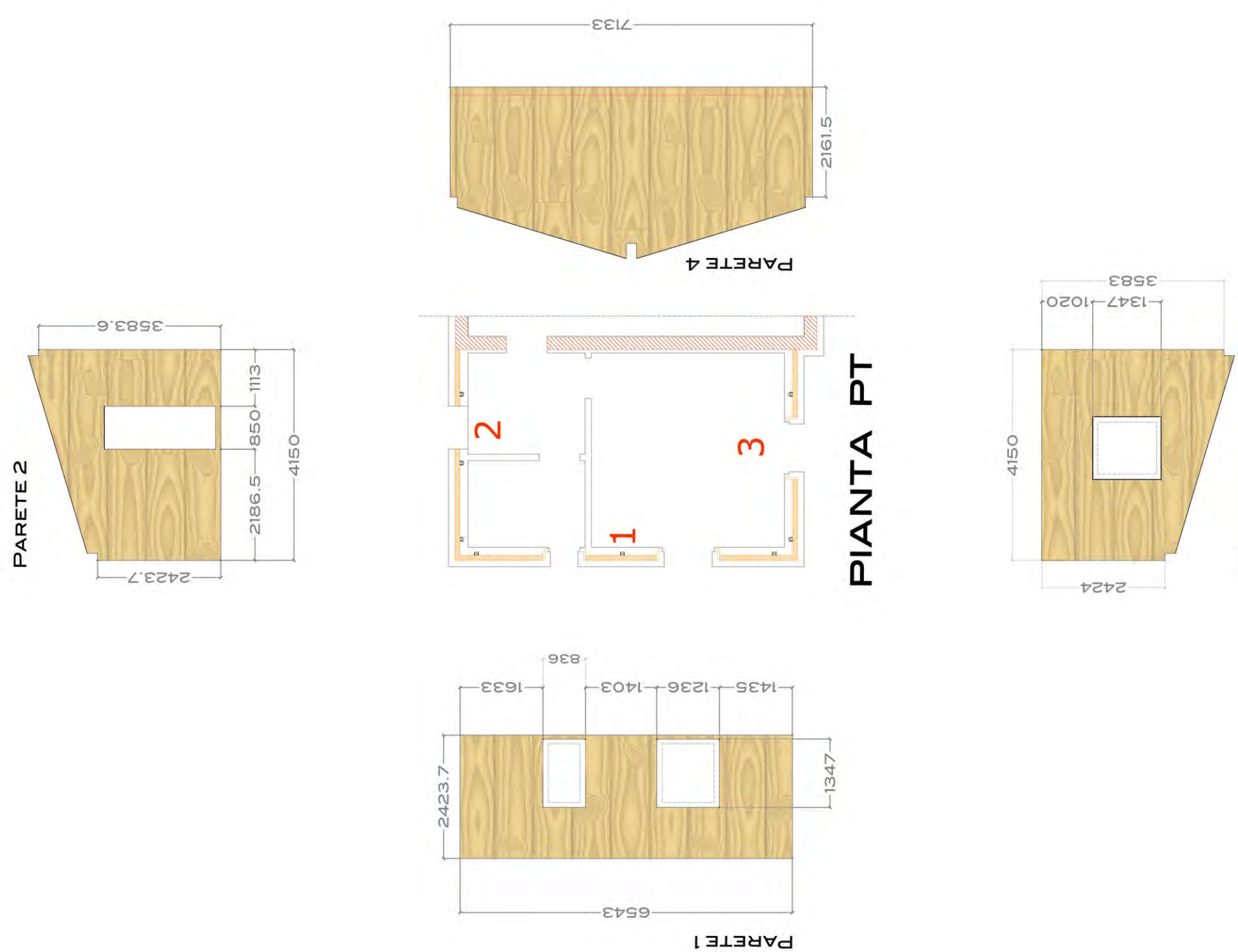
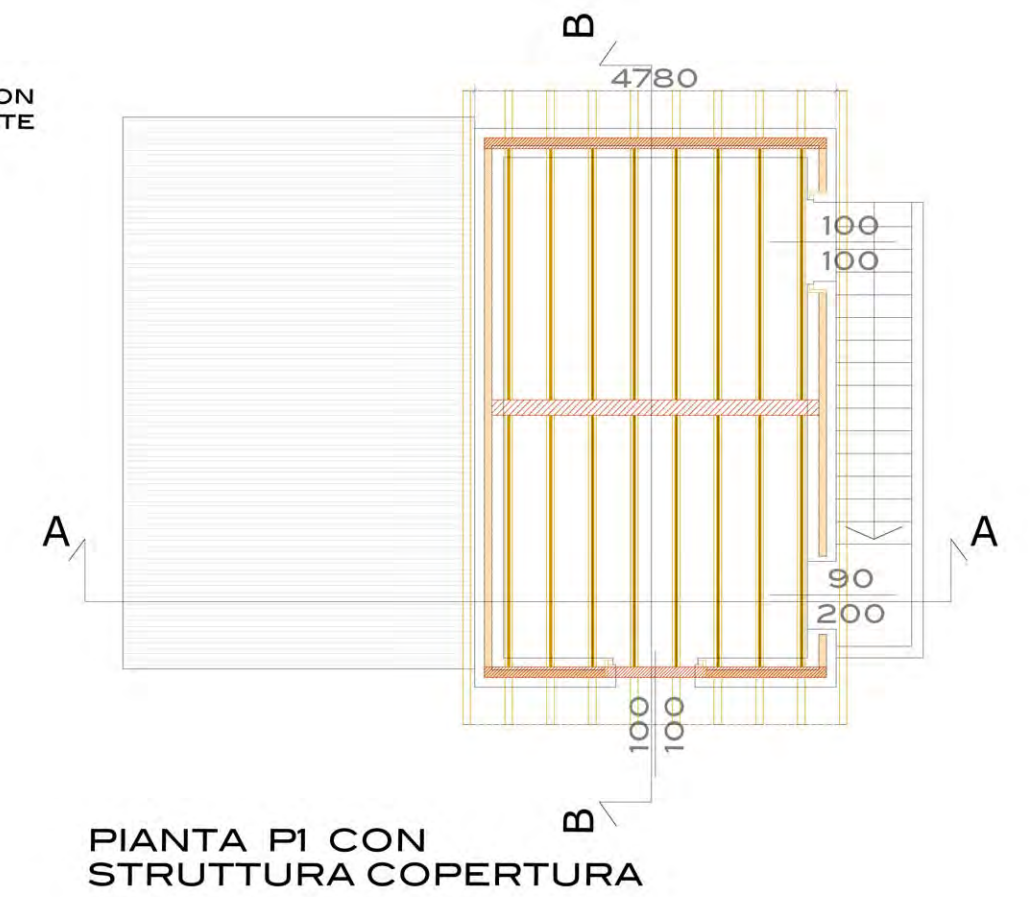
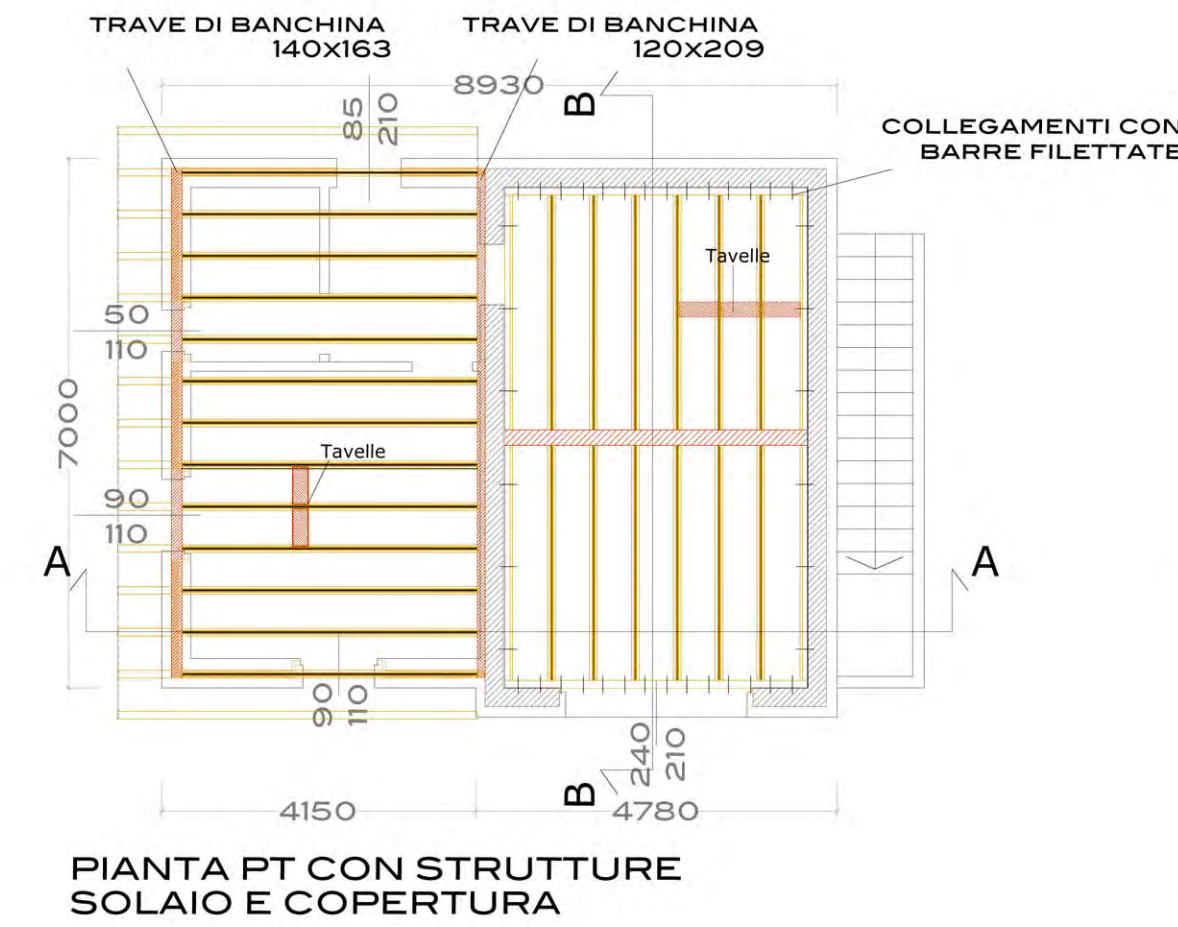
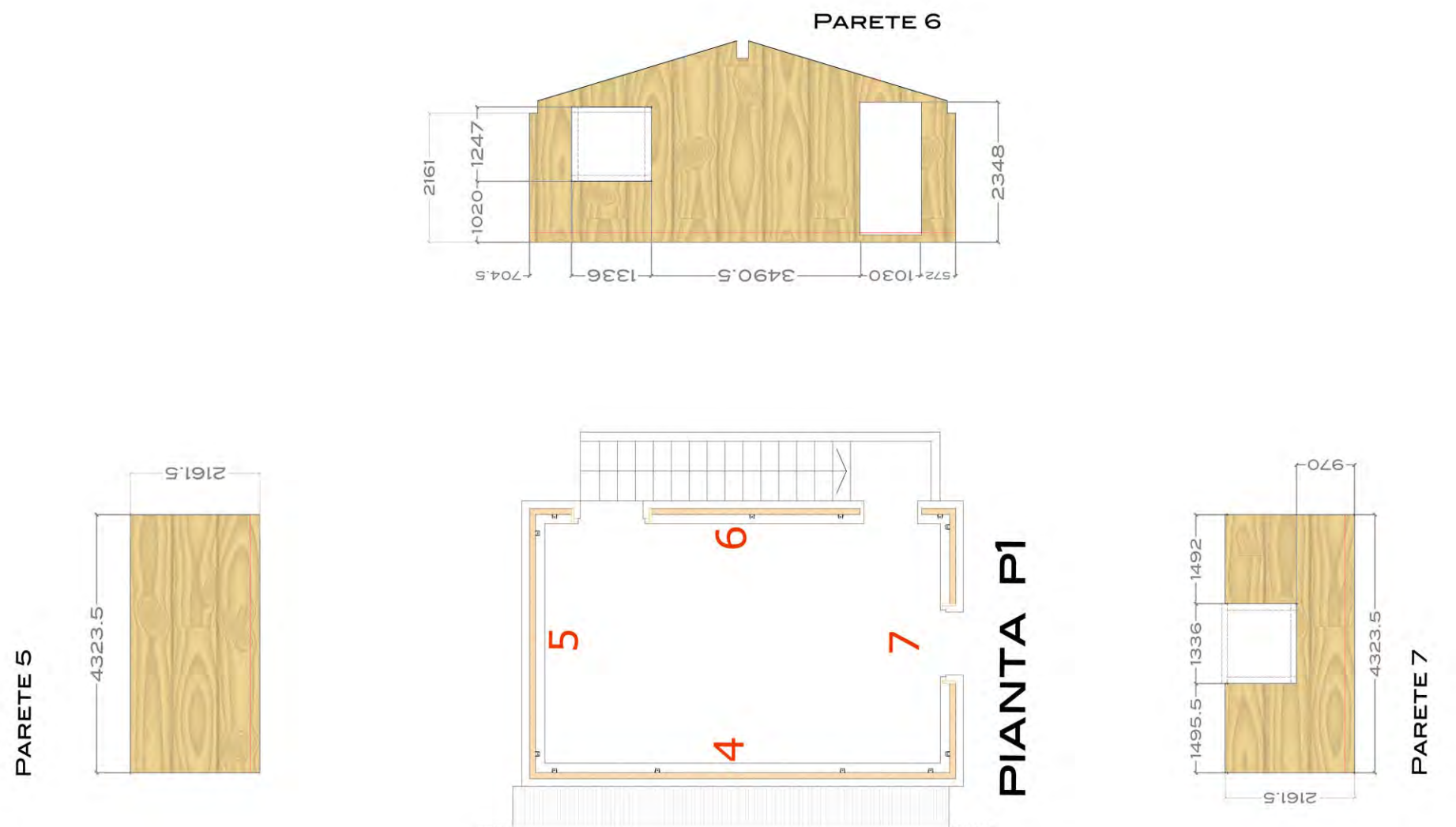
Sistema aperto  
Innovazione sostenibile  
Integrazione tecnologica  
Risparmio energetico



www.abitaremediterraneo.eu

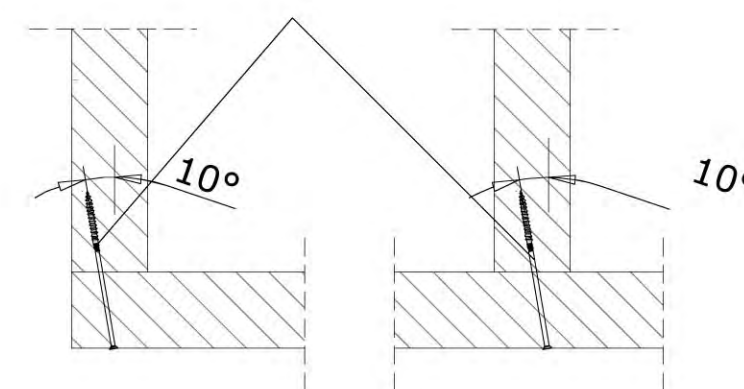
**ELABORATI  
STRUTTURALI**

**RISPESCIA - loc. EX-ENAOLI  
PROTOTIPO ABITATIVO**



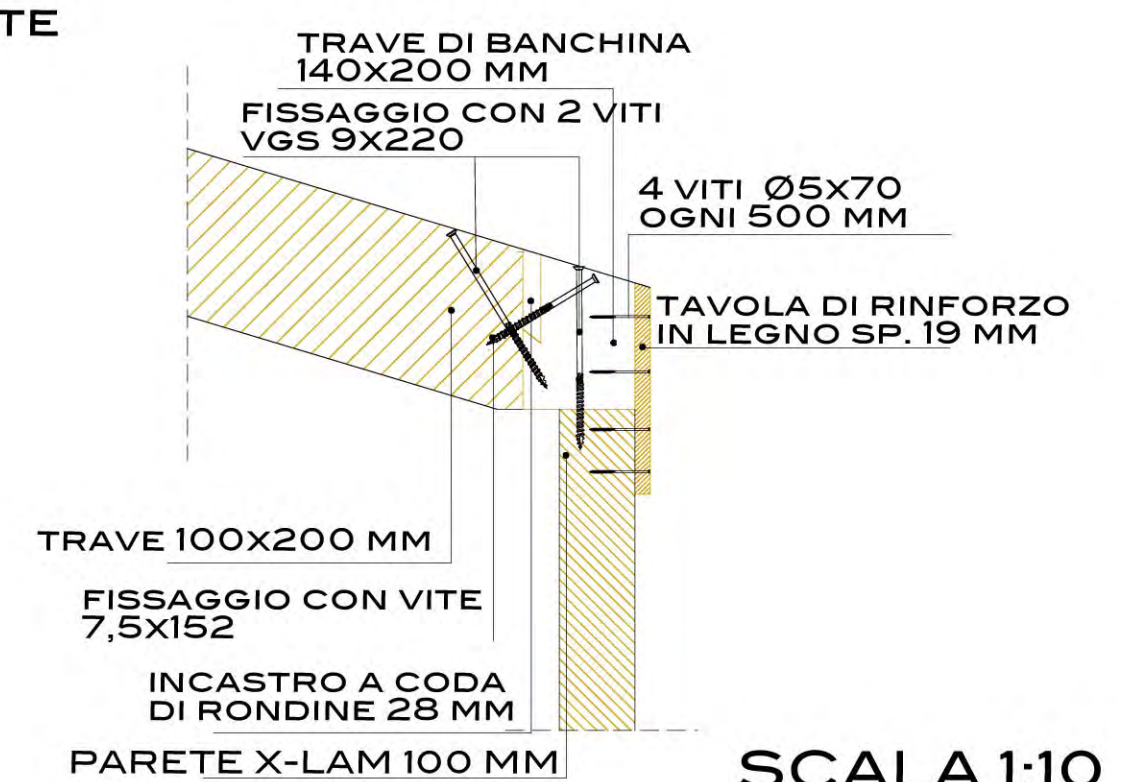
**COLLEGAMENTO PARETI  
ORTOGONALI**

COLLEGAMENTO CON VITI HBS INCLINATE  
(Ø 10X240 OGNI 150 MM)



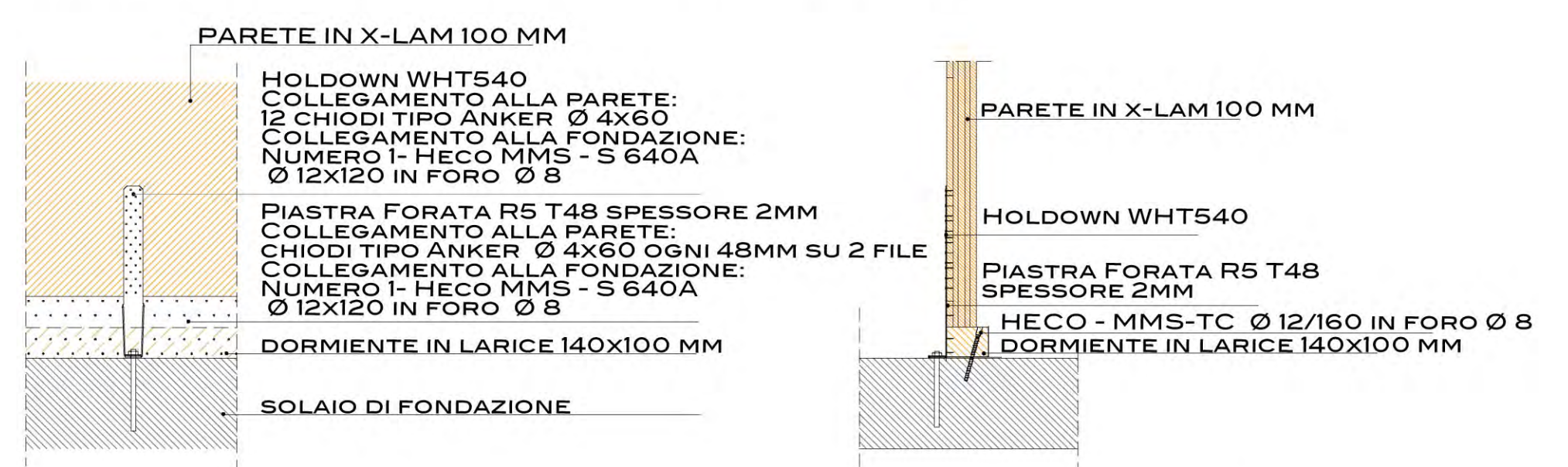
SCALA 1:10

**COLLEGAMENTO  
CORRENTI - TRAVE DI  
BANCHINA**



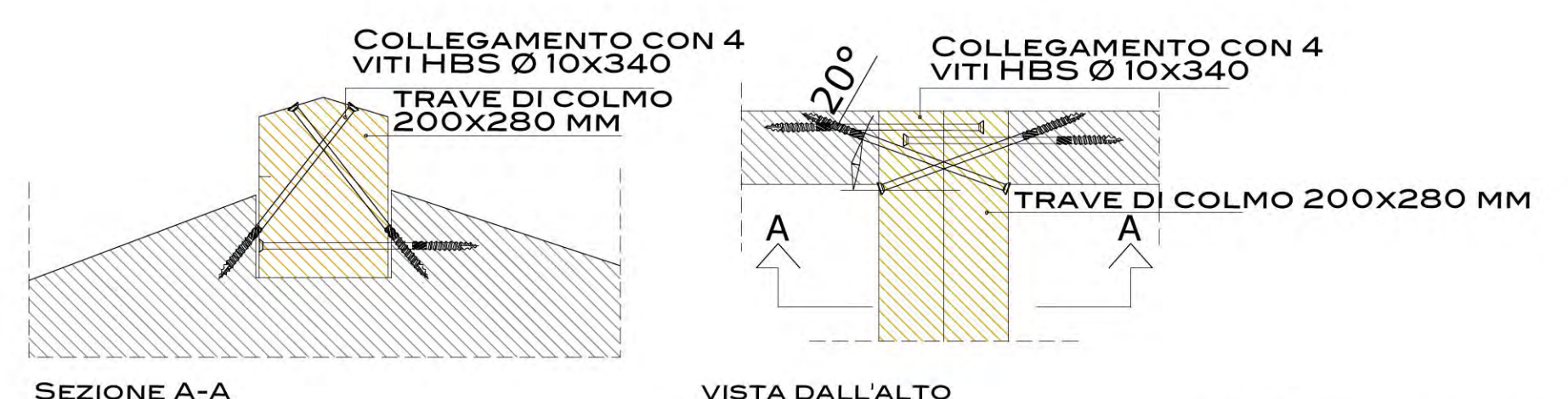
SCALA 1:10

**PARTICOLARE COLLEGAMENTO CON  
HOLD-DOWN (PARETE E FONDAZIONE)**



SCALA 1:20

**COLLEGAMENTO TRAVE DI COLMO - PARETE**



SCALA 1:10

**PARTICOLARE COLLEGAMENTO PARETI IN X-LAM**

